

# Architecture Review Board

February 11<sup>th</sup> 2021 Agenda Items

# ARB-2021-05 238 Boardman Canfield Rd.

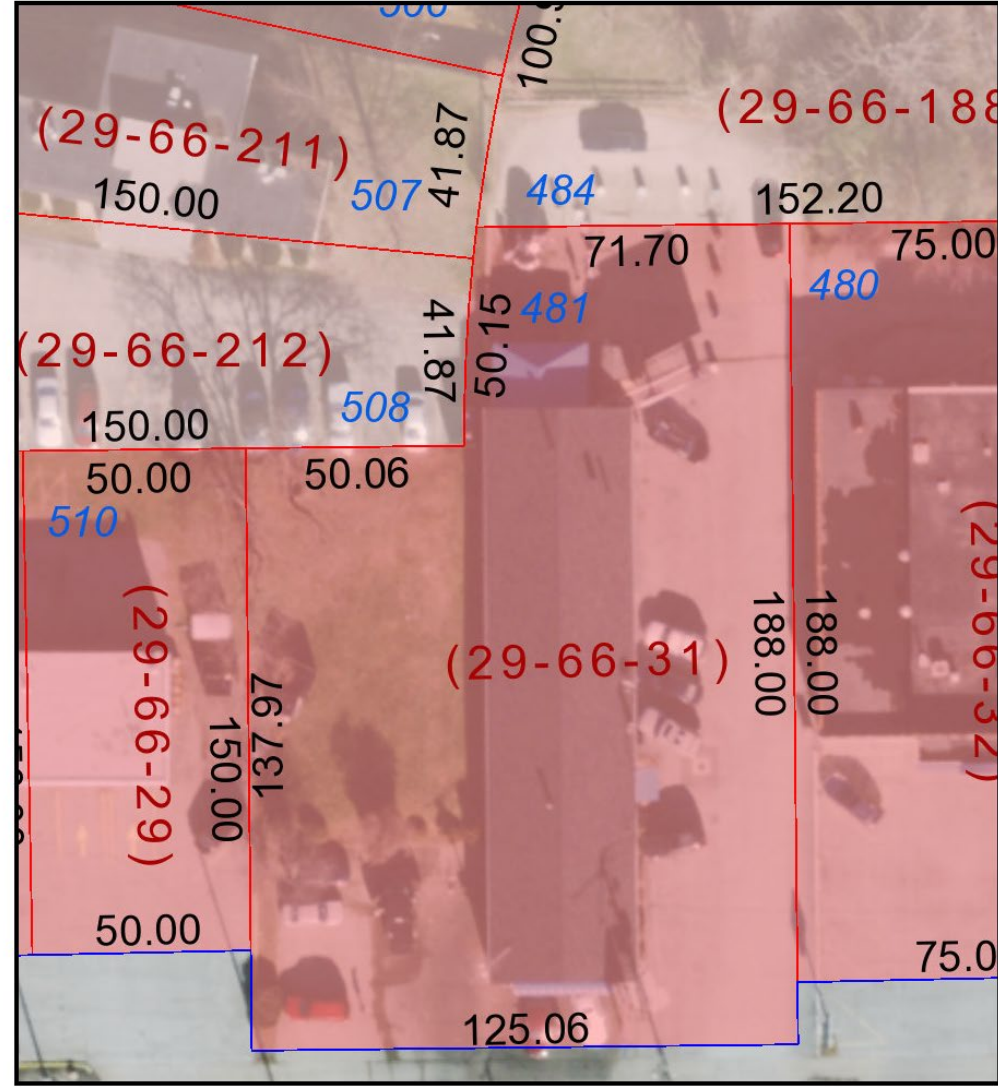
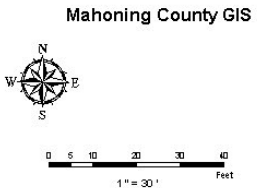


AM10:16 6/NOV/2020



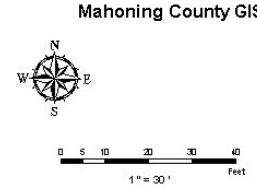
February 2, 2021

- Map Legend**
- |                       |                       |                 |
|-----------------------|-----------------------|-----------------|
| <b>DISTRICT LINES</b> | VILLAGE-LINE          | WATER RESERVOIR |
| CITY-LINE             | DISTRICT INDEX        | PARK            |
| COUNTY-LINE           | <b>BASE MAP PARKS</b> | PARK/SPECIAL    |
| SCHOOL-LINE           | BIKEWAY               |                 |
| TOWNSHIP-LINE         | FAIR                  |                 |



February 2, 2021

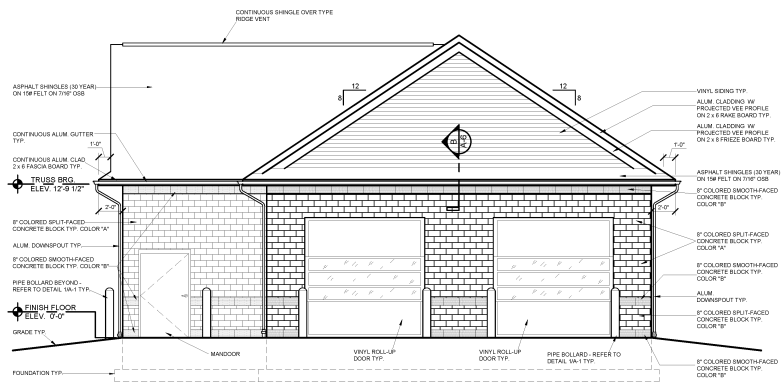
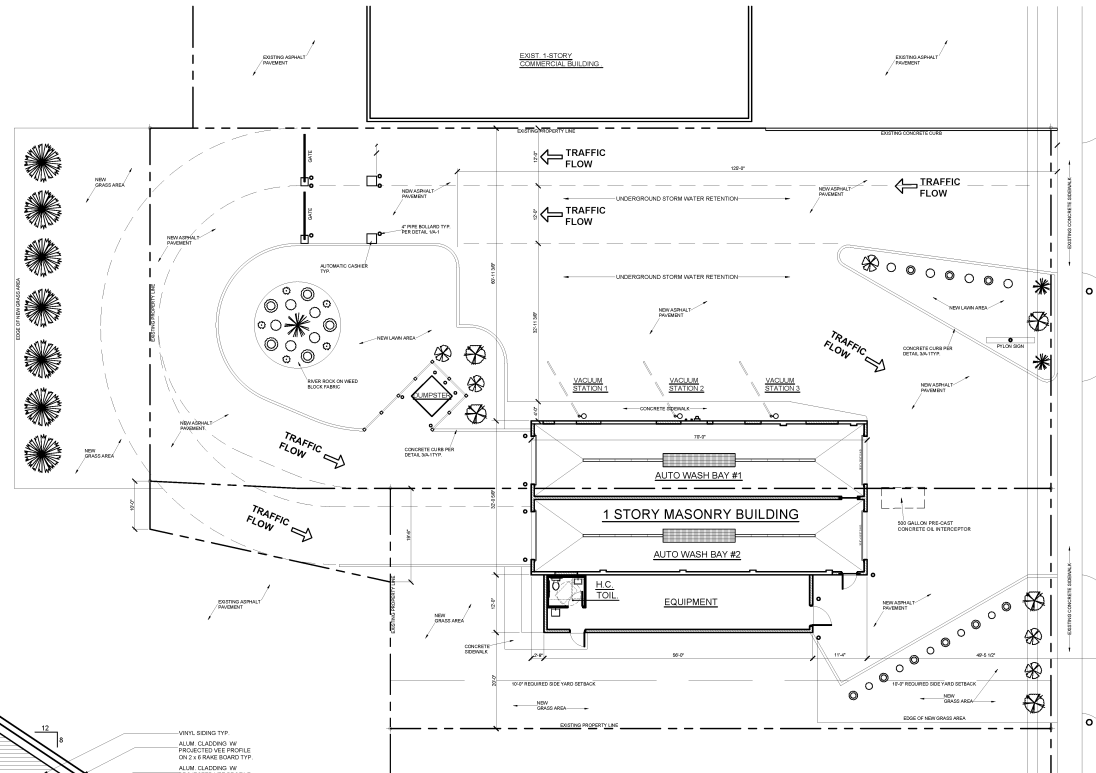
- Map Legend**
- |                       |              |
|-----------------------|--------------|
| <b>DISTRICT LINES</b> | VILLAGE-LINE |
| CITY-LINE             |              |
| COUNTY-LINE           |              |
| SCHOOL-LINE           |              |
| TOWNSHIP-LINE         |              |
| VILLAGE-LINE          |              |



# BOARDMAN CAR WASH

238 BOARDMAN-CANFIELD RD.  
BOARDMAN, OHIO 44512

LANDSCAPE LEGEND	
	DOGWOOD TREE
	CLEVELAND PEAR TREE
	WEeping CHERRY TREE
	EVERGREEN
	GOLD MOP SHRUB
	BOXWOOD SHRUB
	DAY LILY



FRONT ELEVATION - SOUTH

SITE PLAN  
1" = 10'-0"



2 WORKING DAYS  
BEFORE YOU DIG  
CALL 811  
OR CALL TOLL FREE 800-362-2764  
OHIO UTILITIES PROTECTION SERVICE

ARCHITECTURE PLUS  
ENTERPRISES  
INCORPORATED  
ARCHITECTURE  
PLANNING  
DESIGN/BUILD

ROCHELLE YANKEL  
Registered Architect  
13300 CUYA ST  
CLEVELAND, OHIO 44134  
PH: (330) 707-7122

PROPERTY OF  
ARCHITECTURE PLUS  
ENTERPRISES INCORPORATED  
THIS DOCUMENT IS THE PROPERTY OF  
ARCHITECTURE PLUS ENTERPRISES INCORPORATED  
AND IS NOT TO BE REPRODUCED OR  
TRANSMITTED IN ANY FORM OR BY ANY  
MEANS, ELECTRONIC OR MECHANICAL,  
INCLUDING PHOTOCOPYING, RECORDING,  
OR BY ANY INFORMATION STORAGE AND  
RETRIEVAL SYSTEM, WITHOUT THE  
WRITTEN PERMISSION OF ARCHITECTURE  
PLUS ENTERPRISES INCORPORATED.



NAME: RICHARD L. YANKEL  
LICENSE #: 10158  
EXPIRATION DATE: 10/31/21

CAR WASH REMODELING  
238 BOARDMAN-CANFIELD RD.  
BOARDMAN, OHIO 44512

JANUARY 24, 2021

CS-1  
COVER SHEET



SHEET TITLE

**CAR WASH REMODEL**  
 238 BOARDMAN CANFIELD ROAD  
 BOARDMAN OHIO 44512

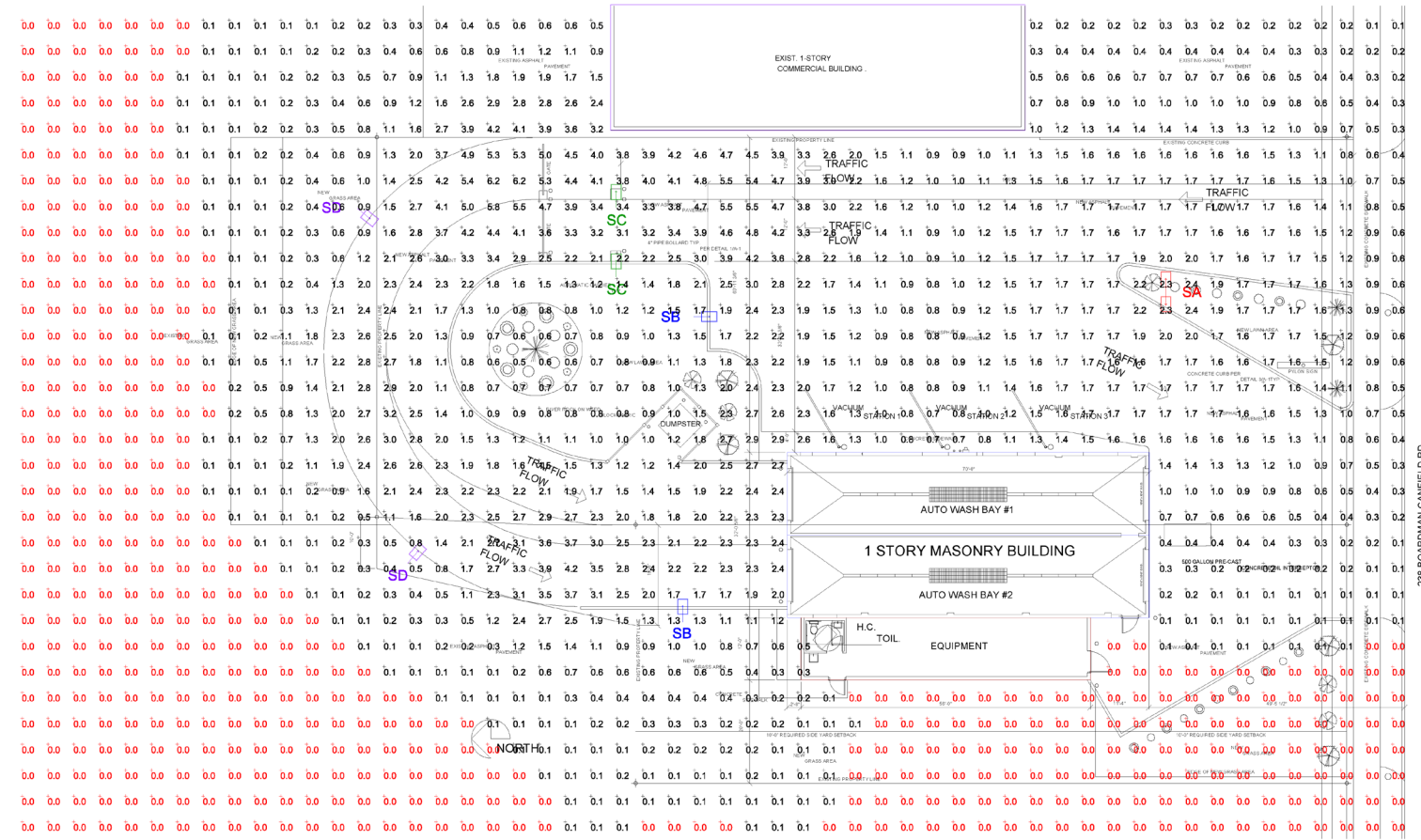
SCALE  
 1/8"=1'

DATE  
 01/26/21

SHEET NAME

**SITE LIGHTING**

SHEET No.  
**ES1**



Symbol	Qty	Label	LLF	Lum. Lumens	Description	Filename	Lum. Watts	Air. Watts
	1	SA	0.900	6300	HUBBELL 2R4R-1-80L-50-4K7-50W-UNV-ASQ-DBT-(MOUNT TO 16' POLE)	R4R1-80L-50-4K7-50W.es	50	100
	2	SB	0.900	6212	HUBBELL R4R1-80L-50-4K7-4W-UNV-ASQ-DBT-(MOUNT TO 16' POLE)	R4R1-80L-50-4K7-4W.es	50	50
	2	SC	0.900	6329	HUBBELL R4R1-80L-50-4K7-3-UNV-ASQ-DBT-(MOUNT TO 16' POLE)	R4R1-80L-50-4K7-3.es	50	50
	2	SD	0.900	3894	HUBBELL R4R1-80L-50-4K7-4W-UNV-ASQ-DBT-8C-(MOUNT TO 16' POLE)	R4R1-80L-50-4K7-4W-8C.es	50	50

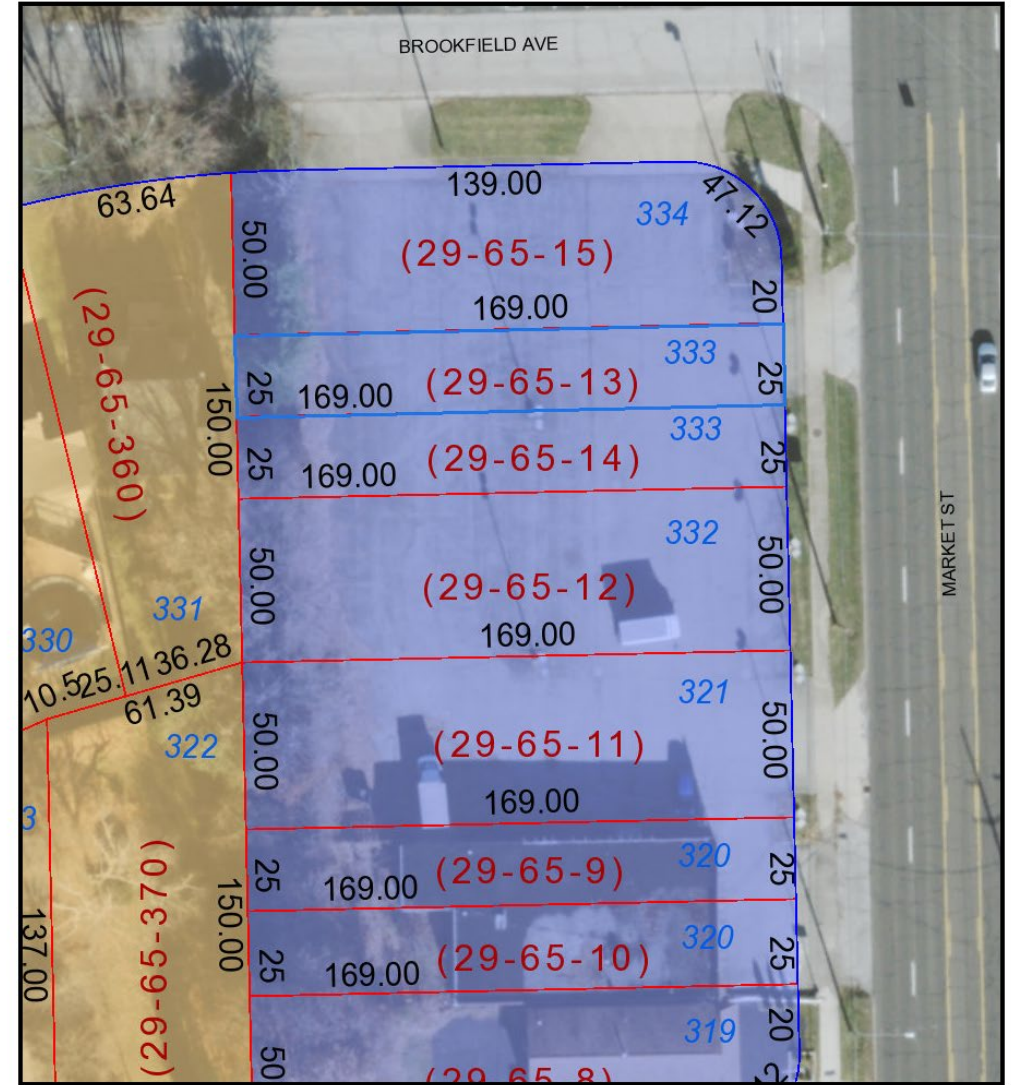
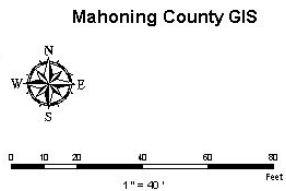
# ARB-2021-06 6532 Market St.





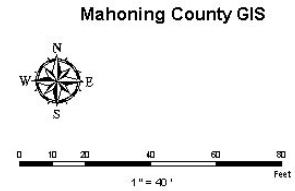
February 2, 2021

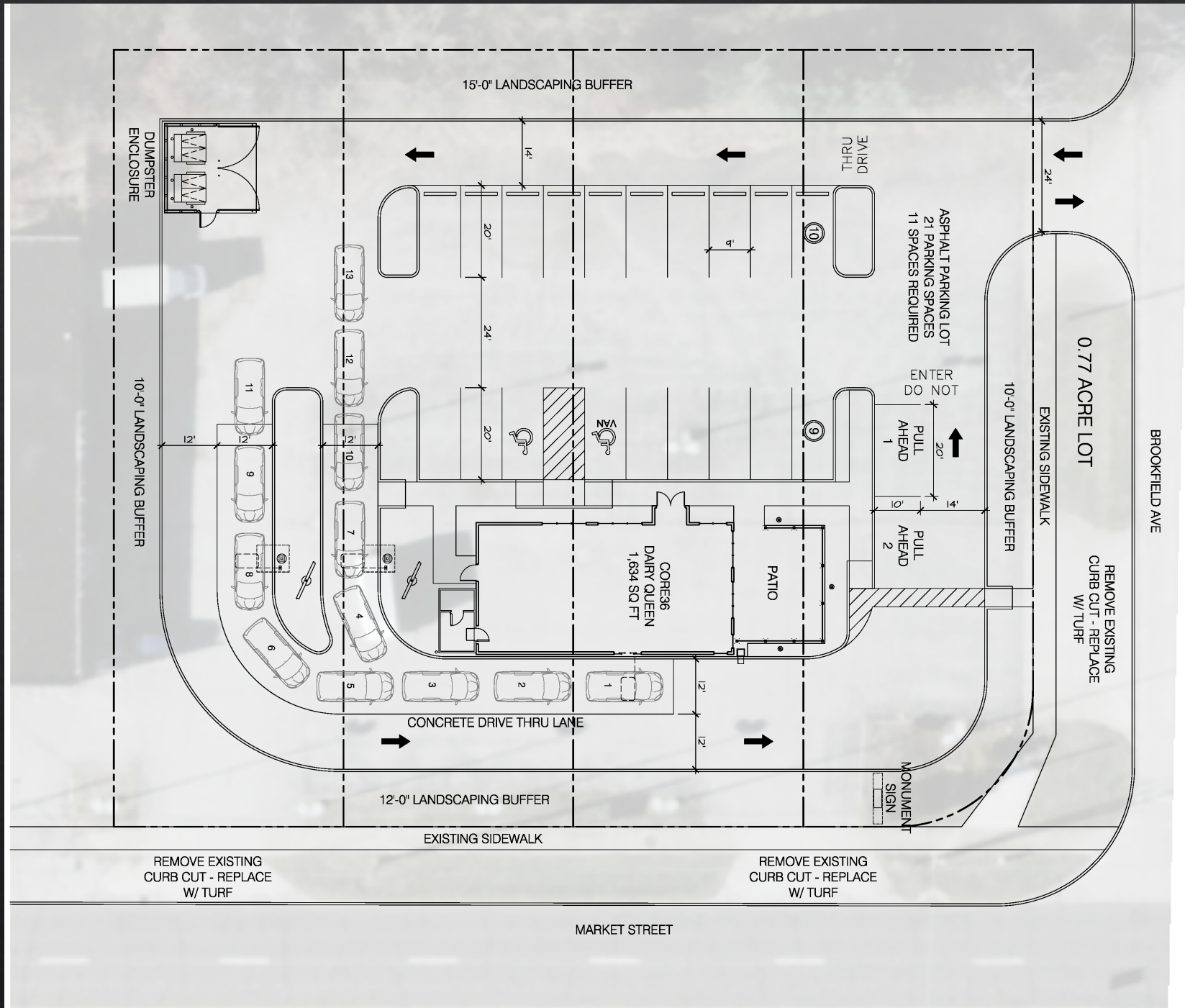
- Map Legend**
- |                                   |                |                       |                 |
|-----------------------------------|----------------|-----------------------|-----------------|
| <b>Search Results: Properties</b> | SCHOOL-LINE    | <b>BASE MAP PARKS</b> | PARK            |
| Override 1                        | TOWNSHIP-LINE  | BIKEWAY               | PARK/SPECIAL    |
| <b>DISTRICT LINES</b>             | VILLAGE-LINE   | FAIR                  | WATER RESERVOIR |
| CITY-LINE                         | DISTRICT INDEX |                       |                 |
| COUNTY-LINE                       |                |                       |                 |



February 2, 2021

- Map Legend**
- |                                   |             |
|-----------------------------------|-------------|
| <b>Search Results: Properties</b> | SCHOOL-LINE |
| Override 1                        |             |
| <b>DISTRICT LINES</b>             | CITY-LINE   |
| COUNTY-LINE                       |             |
| SCHOOL-LINE                       |             |





BROOKFIELD AVE

0.77 ACRE LOT

REMOVE EXISTING CURB CUT - REPLACE W/ TURF

EXISTING SIDEWALK  
10'-0" LANDSCAPING BUFFER

ASPHALT PARKING LOT  
21 PARKING SPACES  
11 SPACES REQUIRED

THRU DRIVE

CORE36  
DAIRY QUEEN  
1,634 SQ FT

PATIO

15'-0" LANDSCAPING BUFFER

10'-0" LANDSCAPING BUFFER

12'-0" LANDSCAPING BUFFER

CONCRETE DRIVE THRU LANE

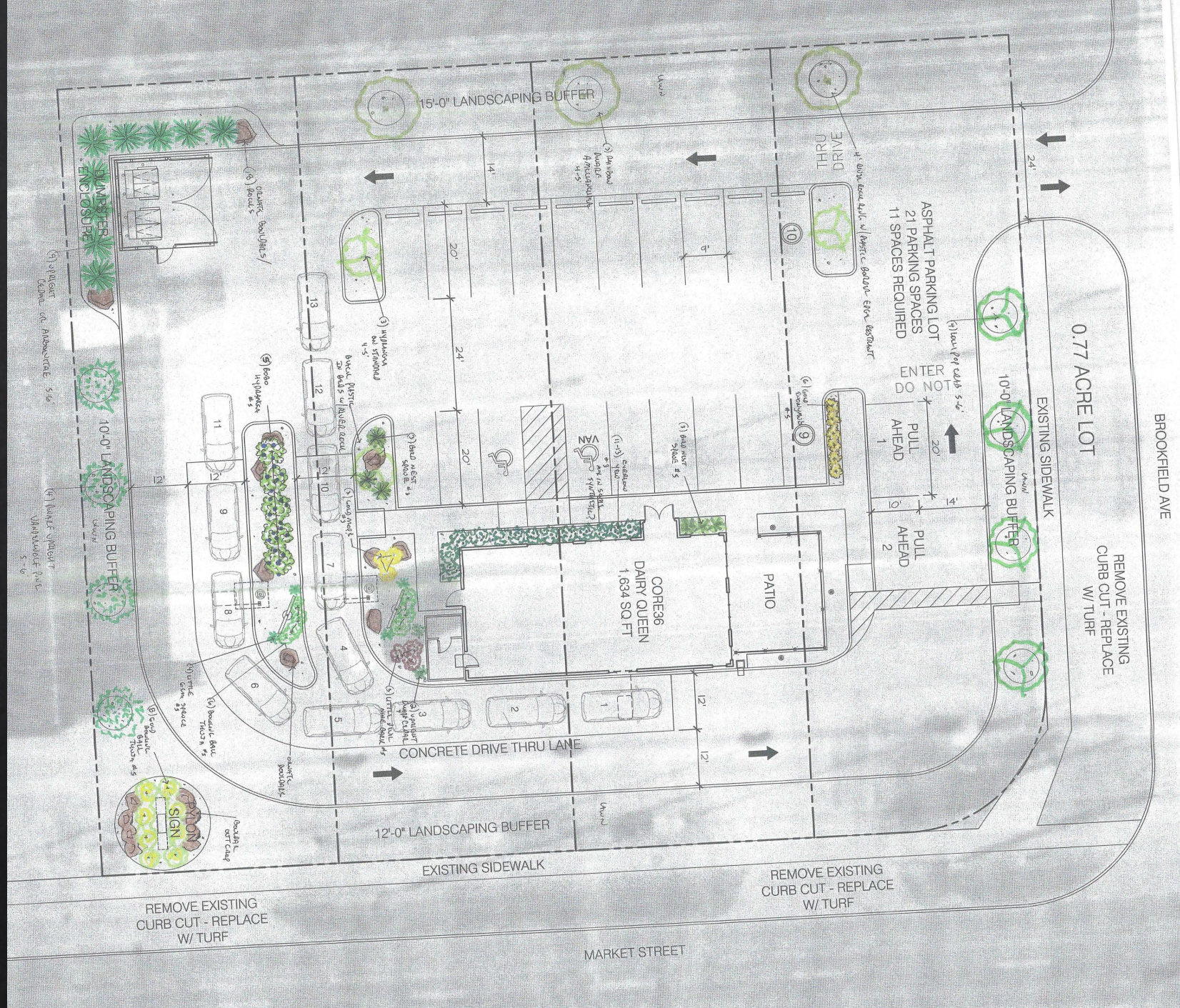
EXISTING SIDEWALK

REMOVE EXISTING CURB CUT - REPLACE W/ TURF

REMOVE EXISTING CURB CUT - REPLACE W/ TURF

MARKET STREET









# ARB-2021-07 7412 Market St.





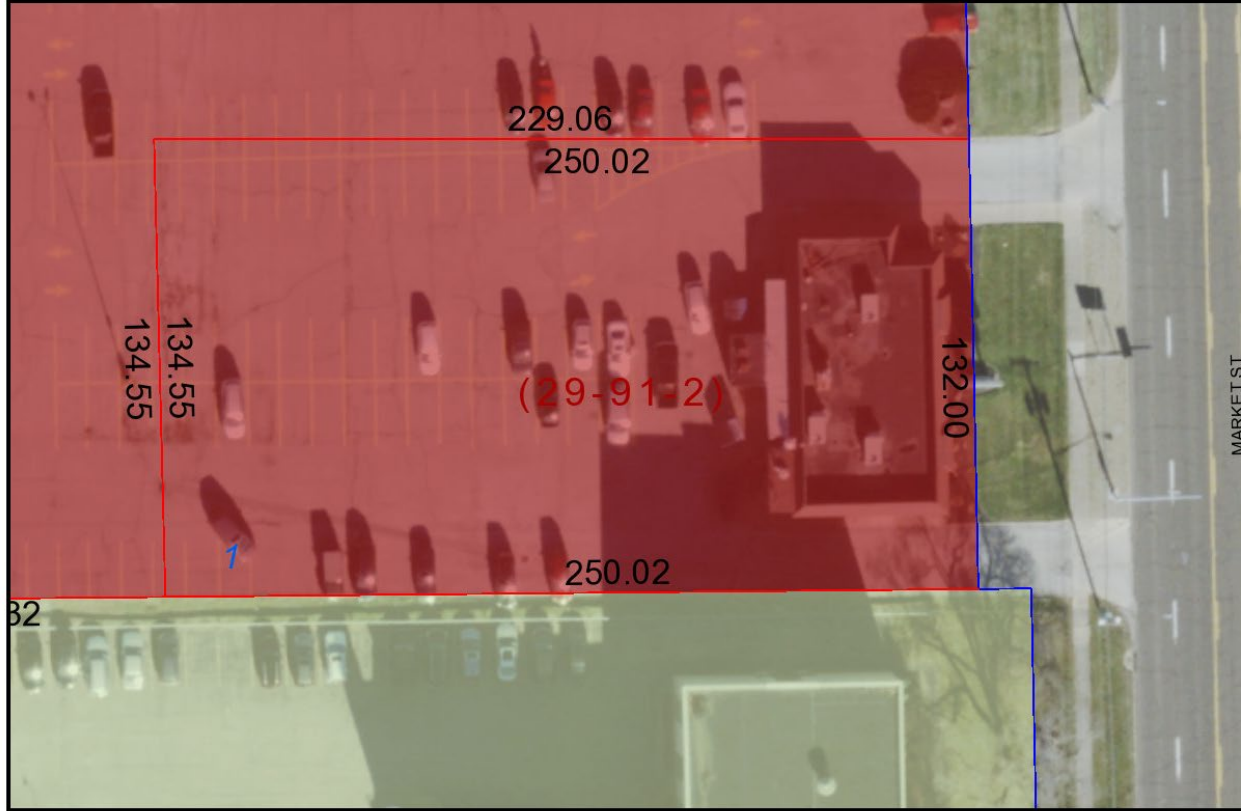
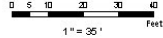
February 2, 2021

**Map Legend**

- |                       |               |                       |                 |              |
|-----------------------|---------------|-----------------------|-----------------|--------------|
| <b>DISTRICT LINES</b> | SCHOOL-LINE   | DISTRICT INDEX        | FAIR            | PARK/SPECIAL |
| CITY-LINE             | TOWNSHIP-LINE | <b>BASE MAP PARKS</b> | WATER RESERVOIR |              |
| COUNTY-LINE           | VILLAGE-LINE  | BIKEWAY               | PARK            |              |



Mahoning County GIS



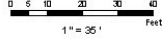
February 2, 2021

**Map Legend**

- |                       |               |
|-----------------------|---------------|
| <b>DISTRICT LINES</b> | SCHOOL-LINE   |
| CITY-LINE             | TOWNSHIP-LINE |
| COUNTY-LINE           |               |

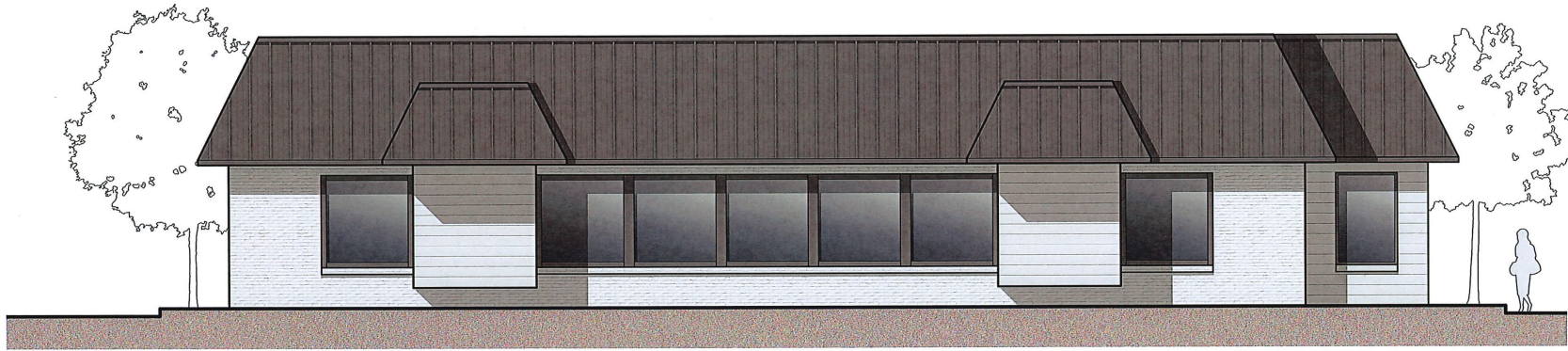


Mahoning County GIS

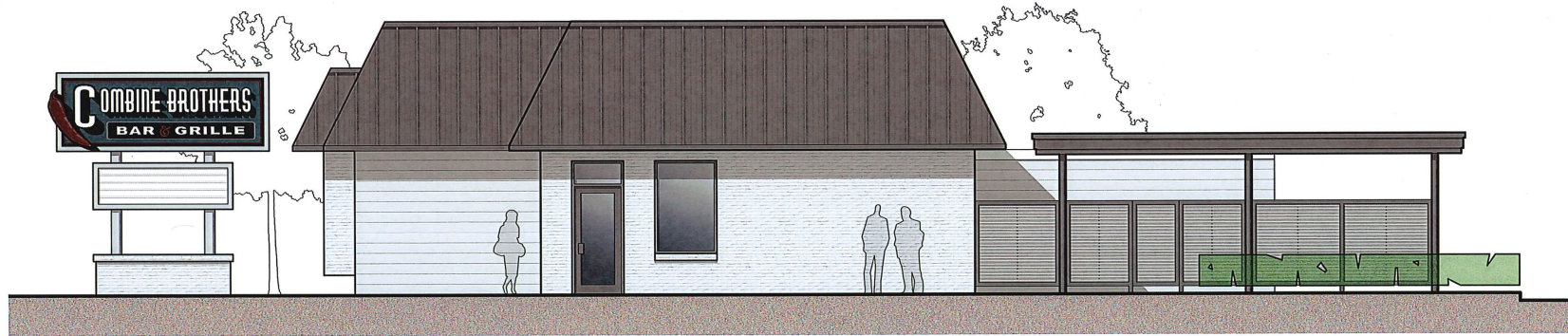




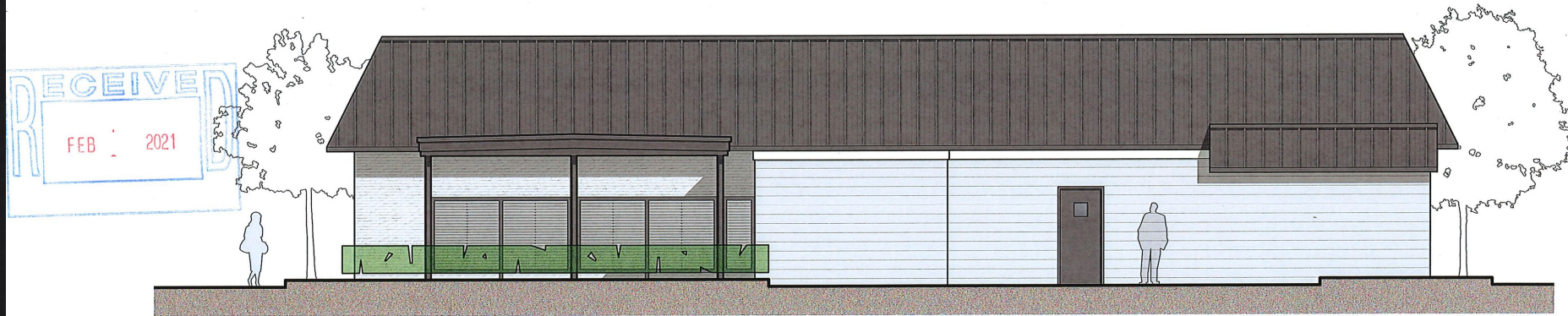
SITE PLAN  
1" = 30'-0" N



**EAST ELEVATION**  
1/8" = 1'-0"



**NORTH ELEVATION**  
1/8" = 1'-0"



**WEST ELEVATION**  
1/8" = 1'-0"