

# Architecture Review Board

December 10<sup>th</sup> 2020 Agenda Items

ARB-2020-09 7334 Market St.





07/22/2020



07/22/2020







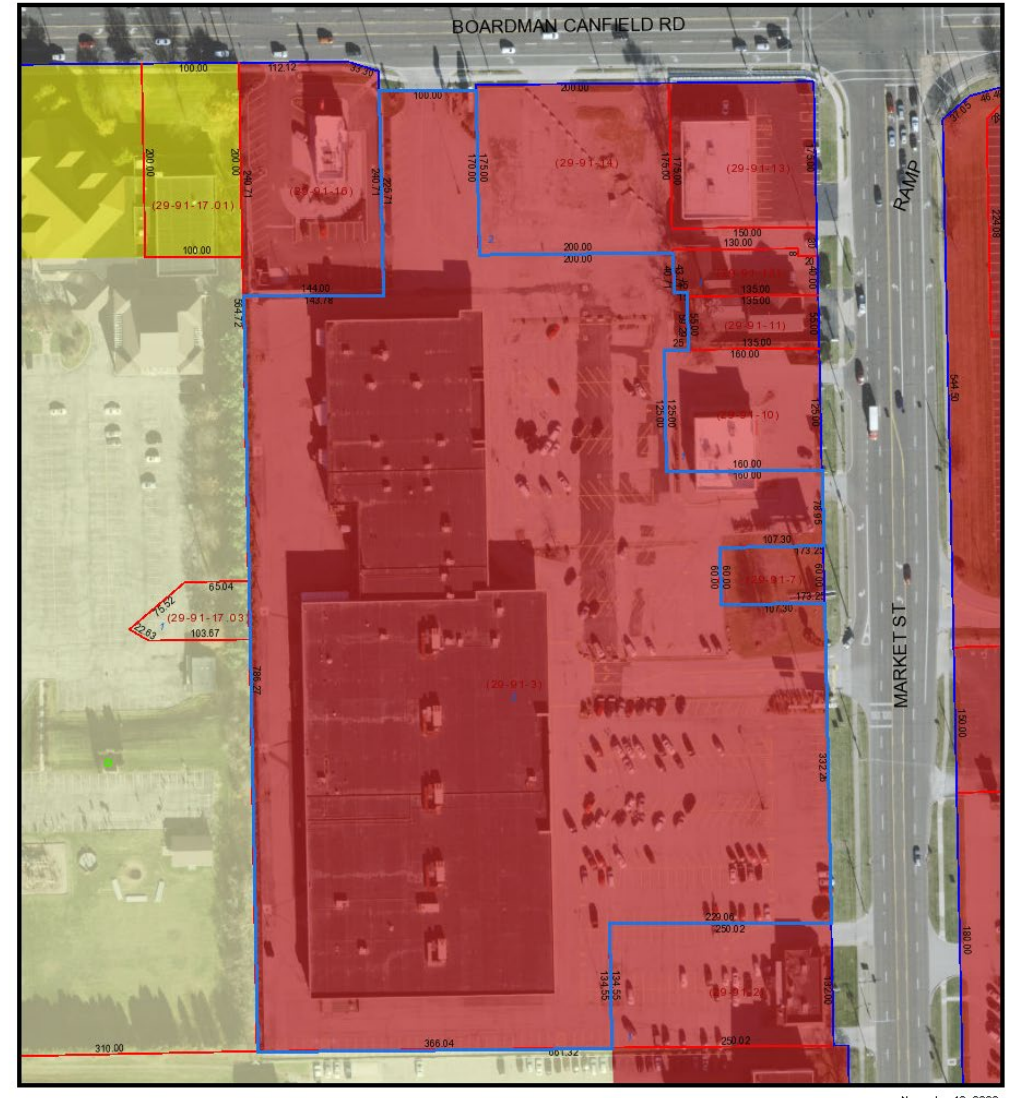
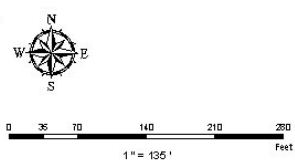


November 19, 2020

**Map Legend**

- |                                   |                |                       |                 |
|-----------------------------------|----------------|-----------------------|-----------------|
| <b>Search Results: Properties</b> | SCHOOL-LINE    | <b>BASE MAP PARKS</b> | PARK            |
| Override 1                        | TOWNSHIP-LINE  | BIKEWAY               | PARK/SPECIAL    |
| <b>DISTRICT LINES</b>             | VILLAGE-LINE   | FAIR                  | WATER RESERVOIR |
| CITY-LINE                         | DISTRICT INDEX |                       |                 |
| COUNTY-LINE                       |                |                       |                 |

Mahoning County GIS

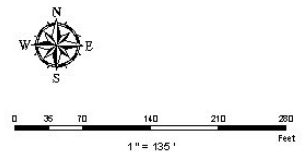


November 19, 2020

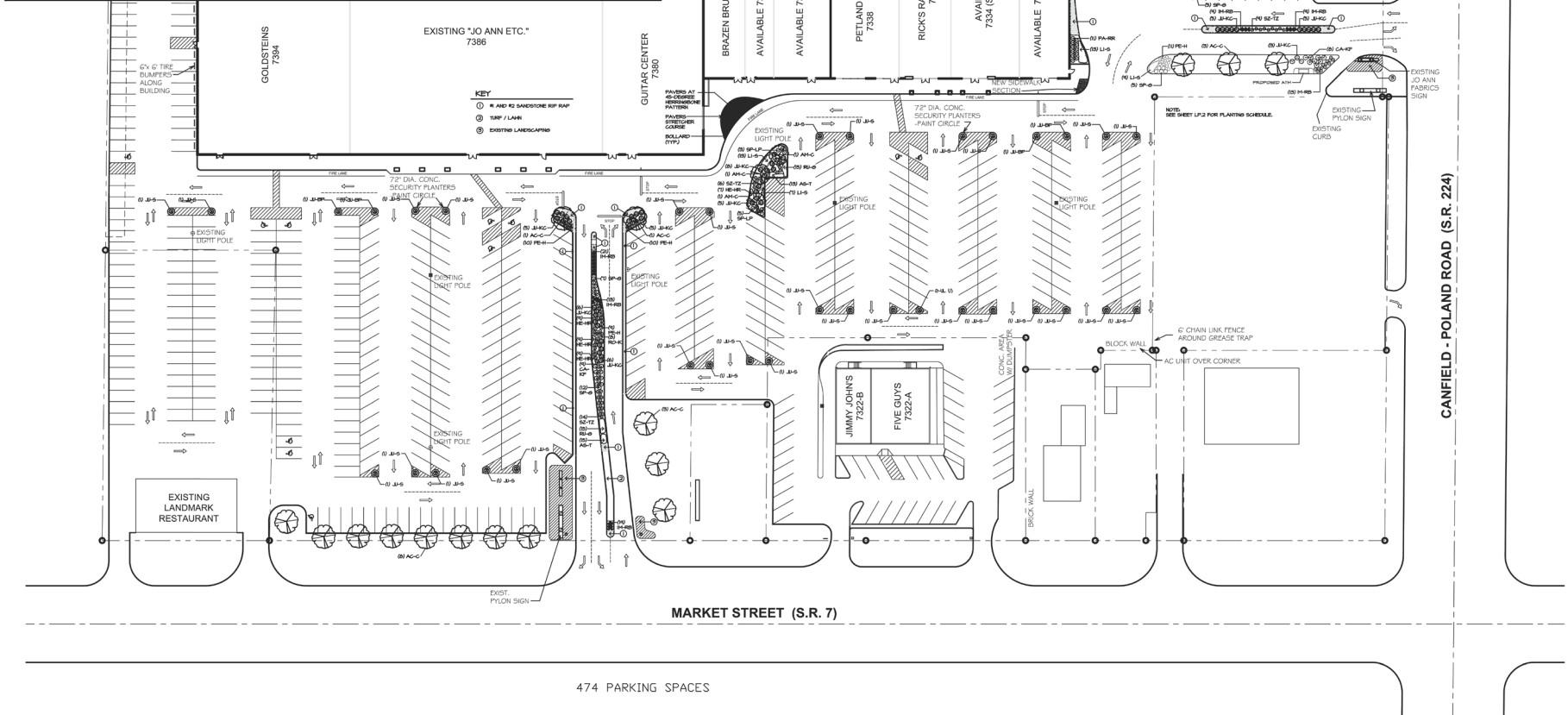
**Map Legend**

- |                                   |  |
|-----------------------------------|--|
| <b>Search Results: Properties</b> |  |
| Override 1                        |  |
| <b>DISTRICT LINES</b>             |  |
| CITY-LINE                         |  |
| COUNTY-LINE                       |  |
| SCHOOL-LINE                       |  |

Mahoning County GIS



PLANTING SCHEDULE					
Code	Qty.	Botanical Name	Common Name	Size	Notes
AC-C	20	Acer x f. 'Celebration'	Celebration Maple	2 1/2" Cal.	B&B
AM-C	3	Amelanchier canadensis	Shadblow Serviceberry	7"	B&B, Multi-
AS-T	18	Asclepias tuberosa	Butterfly Milkweed	#1 Cont.	
CA-KF	33	Calamagrostis x 'Karl Foerster'	Karl Foerster Feather Reed Grass	#2 Cont.	
HM-HR	34	Hemerocallis 'Happy Returns'	Happy Returns Daylily	#1 Cont.	
IM-RB	84	Imperata c. 'Red Baron'	Japanese Blood Grass	#1 Cont.	
JU-KC	58	Juniperus ch. 'Kallay's Compact'	Kallay's Compact Pfitzer Juniper	24"	B&B
JU-BP	4	Juniperus Chinensis 'Blue Point'	Blue Point Juniper	4'	B&B
JU-S	31	Juniperus ch. 'Spartan'	Spartan Juniper	4'	B&B
LI-S	64	Liatris spicata	Spike Gayfeather	#1 Cont.	
PA-RR	11	Panicum v. 'Rotstrahbusch'	Red Rays Switch Grass	#2 Cont.	
PE-H	40	Pennisetum a. 'Hamel'	Dwarf Fountain Grass	#2 Cont.	
RO-K	8	Rosa 'Knock Out'	Knock Out Rose	#5 Cont.	
RU-G	39	Rudbeckia f. var. s. 'Goldsturm'	Black-eyed Susan	#1 Cont.	
SP-G	45	Spiraea x b. 'Goldflame'	Goldflame Spiraea	24"	Cont.
SP-LP	8	Spiraea x b. 'Lemon Princess'	Lemon Princess Spiraea	18"	Cont.
SZ-TZ	48	Schizachyrium scoparium 'Twilight Zone'	Twilight Zone Little Bluestem	#2 Cont.	
TH-OC	5	Thuja Occidentalis 'Techny'	Mission Arborvitae	5'	B&B



SITE LANDSCAPE PLAN

**BOARDMAN CENTER PLAZA**  
7334-7398 MARKET STREET (S.R. #7)  
BOARDMAN, OHIO - MAHONING COUNTY

DATE	NOTES
10.5.18	PRELIMINARY PLAN
10.9.18	REVISED PLANTS

LP.1

SHEET 1 OF 3